

PC47 Sliding Door System with thermal break

System for sliding window and doors with straight aesthetic, which counts with a central minimalistic interlock of just 47 mm of visible section.

It allows maximising the glazing capacity up to 34 mm increasing the acoustic and thermal performance.

Its sashes of up to 280 kg weight allow a maximum dimensions of 2500 (W) x 3000 (H) mm.



PC47 Sliding Door System with thermal break

Transmittance

Uw from 1,1 (W/m²K)

Please consult typology, dimensions and glass

Acoustic insulation

Maximum glazing: 34 mm.

Maximum acoustic insulation **Rw=40 dBA**

Finishes

Possibility of dual colour

Colour powder coating (RAL, mottled and rough)

Wood effect powder coating

Anti-bacterial powder coating

Anodized

Categories achieved at test centre

Air permeability
(EN 12207:2000): Class 3

Water tightness
(EN 12208:2000): Class 7A

Wind resistance
(EN 12210:2000): Class C5
Reference test 1,80 x 2,20 m. 2 sashes



Sections

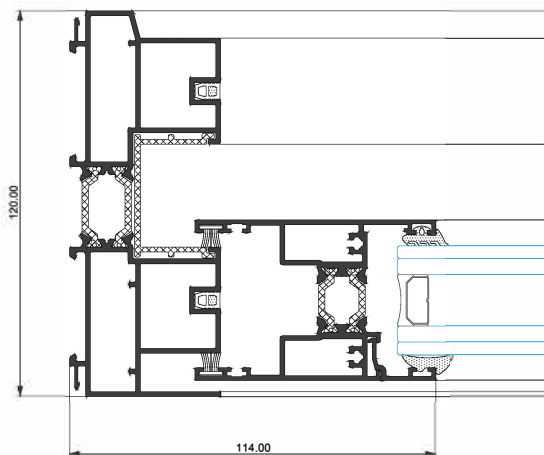
Frame 120 / 115 mm.

Sash 50 mm.

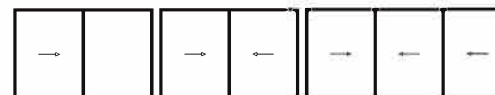
Profile thickness

Balcony 1,5 mm.

Polyamide strip length 20 and 25 mm.



Opening possibilities



Slider of 2 & 3 sashes.
Possibility of 1 rail (1 sash+1 fixed light)

Maximum dimensions/sash

Width (L) = 2.500 mm.
Height (H) = 3.000 mm.

Maximum weight/sash

280 Kg.

Please consult regarding maximum weight and dimensions for other opening types

