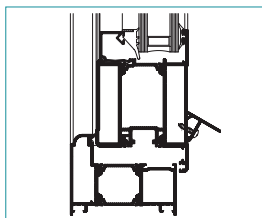
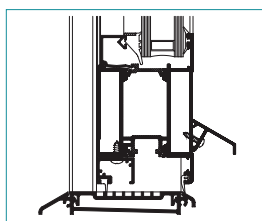


75mm High Performance Doors

A suite of profiles which can be constructed to form single or double, open in or open out doors.



Open out/glaze-in cill



Low threshold cill

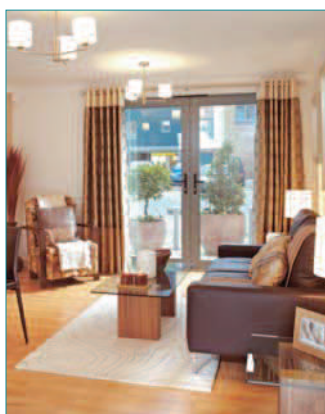
Suitable for both the domestic and light commercial markets, the Dualframe door can be used to achieve both traditional and contemporary styling.

Tested and awarded Kitemarks for PAS23-1:1999 (General Performance Requirements for Door Assemblies) & PAS24-1:1999 (Enhanced Security Performance Requirements for Door Assemblies) for the open in, open out and the low threshold option.*

Unique polyamide strip with integral bead retention leg to minimise projection of door leaf profile (Patent applied for). Stiles are designed to accept full length Eurogroove to ensure compatibility with a wide range of hardware.

- Options include internal or external glazing; standard or 'softline' frames; standard, heavy duty or anti-finger trap
- Weather rated low threshold cill option
- Unique polyamide strip with full depth Eurogroove
- Couples to Dualframe 75mm and 55mm systems, Dualframe roof, Monoframe system and Elegance 52 curtain walling
- Meets Secured By Design specification

* Consult Sapa for relevant product specifications



75MM ENTRANCE DOOR WEATHER PERFORMANCE*:

	Single Open in	Single Open out	Double Open in	Double Open out
Water Tightness	300pa	600pa	200pa	600pa
Air Permeability	300pa	600pa	300pa	600pa
Wind Resistance	1200pa*	2400pa*	2400pa*	2400pa*
Low threshold option	Single Open in	Single Open out	Double Open in	Double Open out
Water Tightness	150pa	300pa	200pa	300pa
Air Permeability	300pa	600pa	200pa	600pa
Wind Resistance	2400pa*	2400pa*	1200pa*	1200pa*

* Exposure category varies with width/height of door and mullion/transom used as they are the only unsupported members.